

# TILT AND SLIDE GIESSE GS1000

Product range

## MANUAL CONTROL VERSION

### Manual operation via cremone/ standard handle

#### GS1000-ML

can be made in these configurations:  
- for European groove with cremone or window handle

- for R40 with cremone or window handle

Sash weight = max **100** kg

Sash width (L) = **630** to **1480** mm

Sash height (H) = **930** to **2400** mm

#### GS1000-HL

can be made in these configurations:  
- for European groove with cremone or window handle

- for R40 with cremone

Sash weight = max **160** kg

Sash width (L) = **630** to **1680** mm

Sash height (H) = **930** to **2400** mm



## FORCED CONTROL VERSION

### Semi-automatic operation via a special, long-handled cremone

#### GS1000-HD 100

Sash weight = max **100** kg

Sash width (L) = **730** to **1300** mm

Sash height (H) = **930** to **2400** mm

#### GS1000-HD 160

Sash weight = max **160** kg

Sash width (L) = **730** to **2000** mm

Sash height (H) = **930** to **2700** mm

#### GS1000-HD 200

Sash weight = max **200** kg

Sash width (L) = **1080** to **2000** mm

Sash height (H) = **930** to **2700** mm



# TILT AND SLIDE GIESSE GS1000

Components

Family	Description	Item code	For version				
			GS1000 ML	GS1000 HL	GS1000 HD 100	GS1000 HD 160	GS1000 HD 200
<b>Carriages set</b>							
	RH SINGLE CARRIAGE SET	09776	✓	✓	✓	✓	
	LH SINGLE CARRIAGE SET	09777	✓	✓	✓	✓	
	DOUBLE CARRIAGE SET	09778					✓
	DOUBLE CARRIAGE SET	09779					✓
<b>Hardware set</b>							
	C.E. BASE HARDWARE SET - GS1000 ML/HL	09780	✓	✓			
	GS1000-HD LH HARDWARE SET	09781			✓	✓	✓
	GS1000-HD RH HARDWARE SET	09782			✓	✓	✓
	C.E. WINDOW HANDLE HW SET - GS1000 ML/HL	09783	✓	✓			
	C.E. BASE HW SET CREM.COVER - GS1000 ML/HL	09784	✓	✓			
	R40 BASE HARDWARE SET - GS1000 ML/HL	09758	✓	✓			
<b>Stay arms</b>							
	630-930 WIDTH STAY ARM	09723	✓	✓			
	931-1280 WIDTH STAY ARM	09724	✓	✓			
	1281-1680 WIDTH STAY ARM	09725	✓	✓			
	GS1000-HD ADDITIONAL ARM	09759			✓	✓	✓
<b>Profiles set</b>							
	630-880 PROFILES SET	09761...	✓	✓	✓	✓	
	881-1080 PROFILES SET	09762...	✓	✓	✓	✓	
	1081-1280 PROFILES SET	09763...	✓	✓	✓	✓	✓
	1281-1480 PROFILES SET	09764...	✓	✓	✓	✓	✓
	1481-1680 PROFILES SET	09765...		✓		✓	✓
	1681-2000 PROFILES SET	09766...				✓	✓
<b>Accessories set</b>							
	ACCESSORIES SET WITHOUT REINFORCEMENT	09774...	✓		✓		
	ACCESSORIES SET WITH REINFORCEMENTS	09775...		✓		✓	✓
<b>GS1000-HD strikers set</b>							
	C.E. STRIKER SET GS1000-HD 10-14	09785			✓	✓	✓
	C.E. STRIKER SET GS1000-HD 12-15	09786			✓	✓	✓
	C.E. STRIKER SET GS1000-HD 13.5-16.8	09787			✓	✓	✓
	C.E. STRIKER SET GS1000-HD 14-18	09788			✓	✓	✓
<b>GS1000-HD incorrect movement safety device</b>							
	GS1000-HD C.E. 14/18 LH INCORRECT MOVEMENT SAFETY DEVICE SET	09791			✓	✓	✓
	GS1000-HD C.E. 14/18 RH INCORRECT MOVEMENT SAFETY DEVICE SET	09792			✓	✓	✓
	GS1000-HD C.E. LH INCORRECT MOVEMENT SAFETY DEVICE SET	09793			✓	✓	✓
	GS1000-HD C.E. RH INCORRECT MOVEMENT SAFETY DEVICE SET	09794			✓	✓	✓
<b>GS1000-HD cremones</b>							
	GS1000-HD RH cremone	09736N...			✓	✓	✓
	GS1000-HD LH cremone	09737N...			✓	✓	✓
	GS1000-HD RH CREMONE WITH KEY	09738N...			✓	✓	✓
	GS1000-HD LH CREMONE WITH KEY	09739N...			✓	✓	✓
<b>Completion elements</b>							
	SUPPORT BLOCK	09789		✓	✓	✓	✓
	MOBILE STRIKER	09790...	✓	✓	✓	✓	✓
<b>Machining templates</b>							
	CENTERING HOLES DEVICE	09804	✓	✓	✓	✓	✓
	TRACK FIXING TEMPLATE	09805	✓	✓	✓	✓	✓
	MOBILE STRIKER TEMPLATE	09806	✓	✓	✓	✓	✓
	CARRIAGE DRILLING TEMPLATE	09801	✓	✓	✓	✓	✓
	GS1000-HD CREMONE DRILLING TEMPLATE	09741N	✓	✓	✓	✓	✓
	GS1000-HD ARMS AND CORNER CLEAT DRILLING TEMPLATE	09803			✓	✓	✓



U0497101/10-2013

# TILT AND SLIDE GIESSE GS1000

Smooth sliding, high performance and design for large windows



**GIESSE**



## TILT AND SLIDE GIESSE GS1000

Giesse's new tilt and slide system has been reinvented in terms of performance and aesthetics.

Giesse's tilt and slide system is the ideal solution for the construction of large windows. It affords maximum convenience and takes up minimal interior space whilst guaranteeing excellent performance. **GS1000 combines the convenience of a sliding window with the secure seal typical of a side-hung window.**

The tilt and slide opening guarantees room ventilation, whilst the slide opening enables the window to be opened effortlessly without taking up space inside the room.

With the Giesse tilt and slide system you can construct **wider and higher windows**, which increase aesthetic value and add light to the room in which they are installed.

Thanks to its linear and appealing design, GS1000 blends in perfectly with any room in which it is installed.

A highly innovative solution in terms of technology and materials, GS1000 is a safe long-term investment.

**Simple to install**, the Giesse tilt and slide system is compatible with the profiles normally used by window-makers.

Just a few simple machining operations on the profile make installing the product extremely simple.

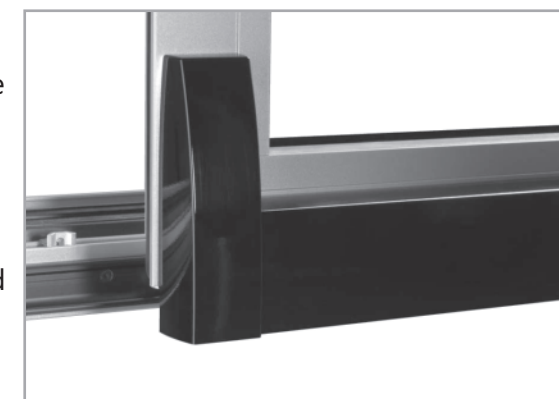


- 1 **Large size**
- 2 **Extended range**
- 3 **Minimal space requirements**
- 4 **Modern, linear design**
- 5 **Ideal for large profiles**
- 6 **Incorrect movement safety device**

## TILT AND SLIDE GIESSE GS1000

Features

- 1 **Large size**  
The robustness and reliability of the hardware allow you to create sashes of up to **2700 mm** in height and **200 kg** in weight, therefore meeting the requirements of ever-larger opening parts. These sashes are easy to use and slide very smoothly.
- 2 **Extended range**  
The forced control version has been added for sashes of up to 200 kg. There is also a forced control version for light sashes of up to 100 kg in weight.
- 3 **Minimal space requirements**  
The space required for fitting the lower track to the frame is just 35 mm. Therefore the height of the cross-beam and the size of the usable clearance are reduced.
- 4 **Modern, linear design**  
The flat aesthetic of the carriage cover and the machined line of the side plugs give the casement a compact, modern and pleasant design.



sash-frame stand-out 117 mm

- 5 **Ideal for large profiles**  
The large size of the carriages allows the sash to retract from the fixed frame by up to 117 mm. This makes the product perfectly suited for use on very deep insulating profiles, making it possible to install extremely thick glass.

- 6 **Incorrect movement safety device**  
The new incorrect movement safety device for the forced control version prevents the cremone from operating when the sash is in the open sliding position. This safeguards the hardware against damage. The device also prevents the sash from lifting.



## TILT AND SLIDE GIESSE GS1000

Features



- Automatic catch system**  
The automatic sash catch device facilitates closing the sash: when put in the closed position, the sash automatically locks in the tilt position.  
This device is available on all the models in the range(\*).

(\*) Excluding the versions for R40

- Insulation and convenience**  
The GS1000 tilt and slide perfectly combines the convenience and simplicity of a sliding window with the outstanding heat insulation and soundproofing typical of a side-hung window.  
A single action is all it takes to open a window along its full span, allowing completely free passage of air.

- Smoother sliding**  
The increased diameter of the carriage wheels guarantees maximum ease of operation and smooth sliding of the sash. The carriages with brushes prevent dirt depositing on the tracks, ensuring operation of the sash over time.  
The opening stop device, located on the top stay arm, cushions the opening of the sash, avoiding shocks when operated forcefully.

- Easy to assemble**  
GS1000 is designed to be installed on most aluminium profiles which the window-maker normally uses for the construction of side-hung windows.  
On the manually operated versions, the closing hardware do not require profile machining work. In fact, they are fixed onto the sash and frame by means of joints or clamping grub screws, as is typically the case for Giesse FUTURA tilt-and-turn systems.



- Great reliability**  
The new system for hooking the opening arms and stay arms and sliders guarantees a high degree of reliability in terms of the connection between the sash and the frame.

- Highly flexible**  
The modular composition of GS1000 means the product can be made up to order prior to delivery so that nothing is wasted. The components common to the various versions such as the carriages, profile sets and accessories sets allow all the possible combinations of the capacities from 100 to 200 kg and the forced control and manual control versions.

